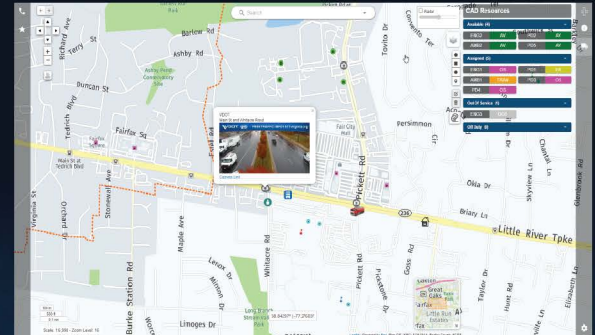




PLOTT LABS™

Plott Labs™ Computer Aided Dispatch (CAD) is a highly integrated SaaS application helping dispatchers and first responders minimize response times while effectively managing response resources.



ULTIMATE FLEXIBILITY

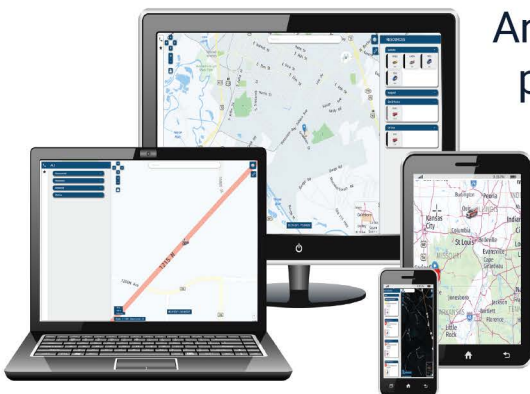
Modular and lightweight, this CAD offers superior configurability & portability. Users can access all Plott Labs™ functionality anytime, anywhere through any internet connected device, on the screen of their choice.

With real-time data updates, command staff can track and manage theater resources more efficiently and can cross-reference multiple incidents in real-time.

INTELLIGENT MAPPING

An integrated Geographic Information System (GIS) provides mapping with native interfaces for alerts, automatic vehicle location and mobile computer aided dispatch functionality.

Incidents, contacts, locations, resources and notifications all populate on the same screen to ensure rapid, informed responses and enhanced situational awareness.



WHO WE ARE

Plott Labs™ is an innovative provider of incident response SaaS solutions that connect the right people with the right data at the right time. Our mission is to improve the safety and well-being of people and their communities.

FOR MORE INFORMATION OR TO BOOK A DEMO
Contact Us @ info@plottlabs.com

TECH SPECS >

Plott Labs™ TECH SPECS

Simplified Incident Handling

Filter incidents by type to arrange active calls by priority. Create alerts and assign incidents with a single button click for efficient incident handling.

Incidents 1									
Inc. ID	Priority	Status	Location	Location ID	Inc. Type	Inc. Subtype	Agency		
W17111912		LOCKED	2021	1000 Veterans Ave					
W17123832		LOCKED	10201	300 Morgan Ave. Austin					
ABW0001100148		PENDING	10100	400 Morgan Ave. Austin	10-50		ASAP		
AF120421 000397		PENDING	10100	300 Morgan Ave. Austin	10-50		ATD		
AF120221 000218	3	ASSIGNED	10201	300 Morgan Ave. Austin	10-Pia		ATD		

Efficient Resource Monitoring & Dispatching

Integrated display shows the status and location of all resources available for dispatching purposes.

[illegible]

Plott Labs™ BENEFITS

Easy Access

- SaaS solution requires only a browser and network access
- Optional Command Line entry for dispatching
- ProQA Platinum Certified

Intuitive User Interface

- Fully configurable screen layout
- One-button access to commonly used incident handling functions
- Display incident activity visually using an integrated, fully compliant GIS mapping system


Certifications, Compliance & Testing

- JITC Certified for DoD Deployments
- Validated to operate with standard ESInet environments including AT&T, Intrado, INdigital, Synergem, MicroAutomation and others
- NENA i3 Compliant
- TELCORDIA Compliance Tested (NENA SPECIFICATIONS)
- Tested and Proven Functional at NENA ICE
- Compatible within Legacy E-911 environments

Other Offerings in the Plott Labs™ Solutions Suite

- **Plott Labs™ Call Handling** – Proven, software-based call handling application that integrates with existing PSAP infrastructure to provide Next Generation 9-1-1, advanced communications and command & control functions.
- **Plott Labs™ Map** – Accurate, integrated mapping system that assists with call routing and delivers location information that is easily shared with dispatchers and first responders.
- **Plott Labs™ Mobile** – Provides scalable, flexible and mobile access to mission-critical information on any platform.



 **PLOTT LABS**
5285 Shawnee Road Suite 500
Alexandria, VA 22312
Phone: 571-895-4088

Contact Us - info@plottlabs.com
Plott Labs™ 2022. All Rights Reserved